



**Radionics<sup>®</sup>**

## D9061 Fire Graphics Display Software

---

### User's Guide

# Contents

<b>1.0</b>	<b>Introduction</b> .....	<b>2</b>
<b>2.0</b>	<b>The Runtime Screen</b> .....	<b>2</b>
2.1	Status Display .....	2
2.2	Status Scroll Buttons .....	3
2.3	Zoom Controls.....	3
2.4	Mode Control Button.....	3
2.5	View Button .....	3
2.6	Accept Button .....	3
2.7	Picture Area.....	3
2.8	Status Panels .....	4
2.9	System Control Buttons .....	4
2.9.1	Global Keys Page.....	4
2.9.2	Isolations Page.....	5
2.9.3	System Events Page.....	6
2.9.4	Options Page.....	7
2.9.5	Users Page.....	8
2.10	Print Screen Button.....	8
2.11	View Event Log Button.....	9
2.12	Log In/Out Button .....	11
2.12.1	Logging In to the D9061 Fire Graphics Display Program .....	11
2.12.2	Logging Out of the D9061 Fire Graphics Display Program .....	11
2.13	Enable/Disable .....	11
2.13.1	Partial Zone Disablement.....	11
2.14	Logging onto a Panel .....	11

# Figures

Figure 1: Runtime Screen .....	2
Figure 2: System Controls, Global Keys Page .....	4
Figure 3: Zone Isolation Screen .....	5
Figure 4: Current Disablements Screen .....	5
Figure 5: Isolate by Zone Screen .....	6
Figure 6: Isolate by Device Screen.....	6
Figure 7: System Controls, Events Page.....	6
Figure 8: System Controls, Options Page.....	7
Figure 9: System Controls, Users Page .....	8
Figure 10: Users Data Screen.....	8
Figure 11: Event Log Screen .....	9
Figure 12: Event Log, Filter Selection Screen.....	9
Figure 13: Updated Event Log Screen .....	10
Figure 14: Event Log, Report Preview Screen .....	10
Figure 15: Log In Password Window .....	11
Figure 16: Log Out Confirmation Window.....	11
Figure 17: Logging Onto a Panel Display.....	12

## User's Guide

### 1.0 Introduction

The D9061 Fire-Graph is a graphics display software program that provides the user with the ability to monitor the status of a fire system, locate devices in alarm and allow some control of the fire system's operation.

The D9061 software runs under the Windows 95 operating system, and it requires a high performance PC (for example, one with an Intel Pentium processor), 16 MB of memory, a video card with at least 2 MB of memory and a spare communications port. The screen resolution should be set to 600 x 800. A protection key must be connected to one of the parallel printer ports to allow the program to run. This key will not affect the operation of the printer.

The following section of this guide explain each function of the runtime screen.

### 2.0 The Runtime Screen

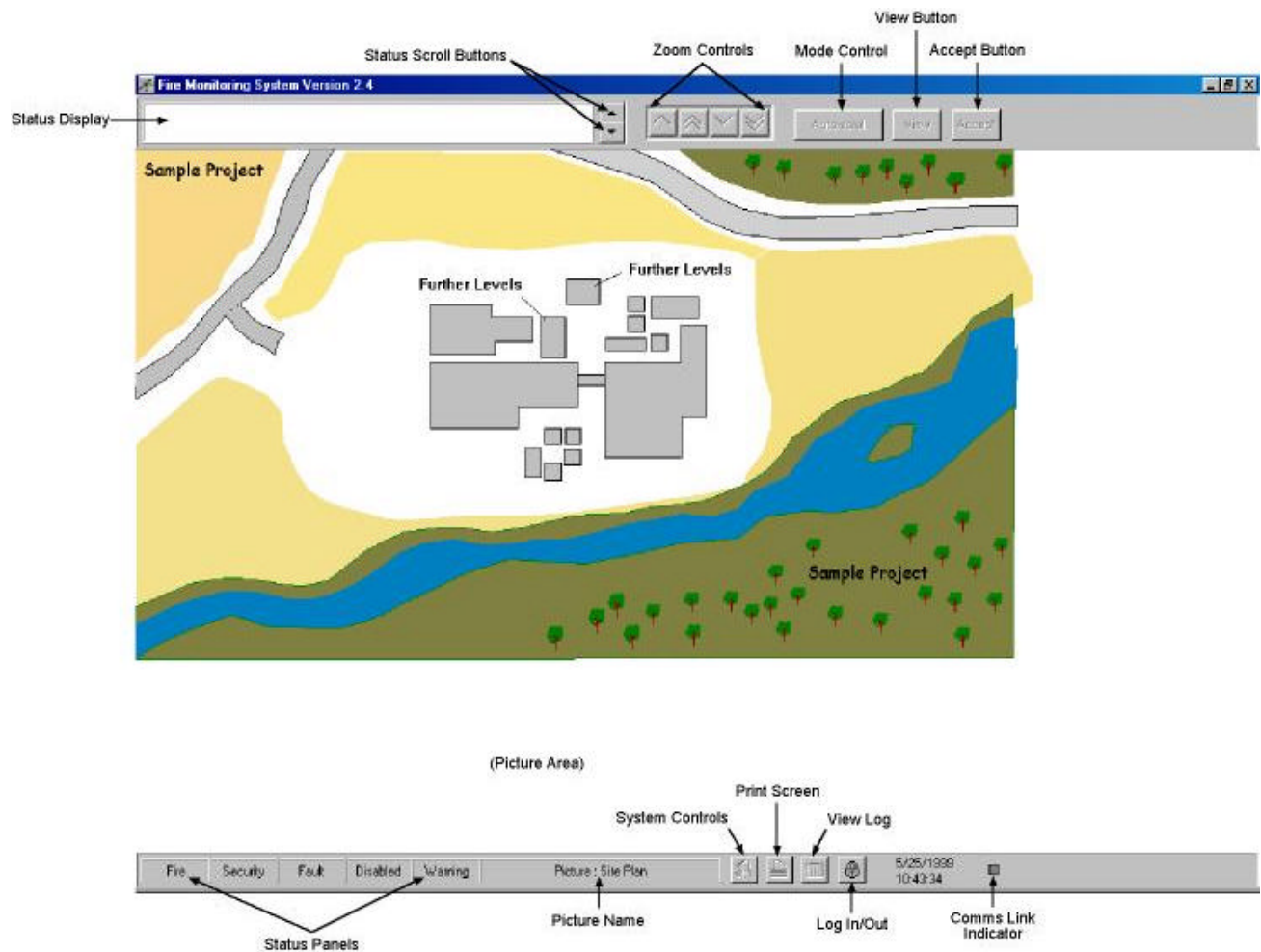


Figure 1: Runtime Screen

#### 2.1 Status Display

The Status Display area holds up to two lines of information related to the current event. If no events are present, then the message "All Clear" is displayed. When a new event of a higher priority than the one currently displayed is detected, the display will then be automatically updated.

Touching or clicking an active status panel will cause that display to change to show the events related to the panel's activity (for example, fire, fault, etc.).

## 2.2 Status Scroll Buttons

In manual mode, these buttons allow you to manually scroll forward and backward through the list of current events. When the last event of the currently selected category has been shown, the next scroll forward operation will return the display to the first event.

## 2.3 Zoom Controls

The Zoom Control buttons consist of the following four buttons: Zoom Up, Zoom to Top, Zoom Down and Zoom Direct. Zoom Up and Zoom Down step through the picture system in the Picture Area (see Figure 1) one level at a time. The next Zoom Down screen is dependent upon the current event shown in the Status Display.

Zoom to Top returns to the site plan picture. Zoom Down Direct moves to the picture where the device in fault or alarm is located.

## 2.4 Mode Control Button

Each time the Mode Control Button is pressed, the operating mode sequences through the different modes: Manual, Auto and Inspect.

- **Manual Mode:** In Manual Mode, you can scroll the Status Display and operate the Zoom Up/Down buttons to move through the pictures related to the alarm shown in the status display. Touching an image that contains a sub-screen will cause a zoom into that screen.
- **Auto Mode:** In Auto Mode, the scrolling of information on the Status Display and the screen Zoom Control is done automatically. For each alarm in turn on the Status Display, the screens (starting at the site plan) are shown in sequence until the location of the device in alarm has been set.
- **Inspect Mode:** Touching an image in Inspect Mode that contains a sub-screen causes a zone list to be displayed. The zone list contains the panel and zone number and the description of all the zones associated with the selected sub-screen.

Zones may be selected from the list and either enabled or disabled. Disabled zones are shown in yellow.

Touching a device image will cause the device's details to be displayed. For Level 2 or 3 users, the device may also be enabled or disabled.

Touching a control panel image will cause a panel display window to be activated.

## 2.5 View Button

The View Button allows you to view and print out a list of all the current events. Notes may be added to the current event to provide additional information. Events are displayed in the relevant color to provide easy recognition of the event type.

## 2.6 Accept Button

The Accept Button allows you to view, accept and add notes to the list of current events. Only current events that have not been accepted or acknowledged by you are displayed. Accepting an event removes it from the displayed list.

## 2.7 Picture Area

The Picture Area displays the current picture. Active devices or sub-screens containing active devices will flash their outlines to indicate to you the location of faults or alarms.

Clicking a sub-screen will cause a Zoom In in Manual Mode. Clicking a sub-screen in Inspect Mode will cause a list of associated zones to be displayed from which you can perform a disablement.

## 2.8 Status Panels

The Status Panels provide a simple identification of the current fire, security, fault, warning and disablements on the system. Each panel flashes when a new event is logged by the system. When the events have been accepted, the flashing is changed to a steady state. When all events are cleared from the system, the panels return to their inactive state.

Clicking on an active status panel will cause the Status Display to switch to show the category of information related to that panel. For example, if the Status Display is showing faults, clicking on the warning panel will cause the Status Display to switch to show warnings.

## 2.9 System Control Buttons



The System Controls Button is available only to users with Level 2 or greater access.

Selecting the System Controls Button provides access to a multi-page display giving the following system features and controls: Global Keys, Isolations, Events, Options and Users.

### 2.9.1 Global Keys Page

This page is shown below in Figure 2, and provides the Global Reset (F5), Mute (F6), Silence (F7), Resound (Alt + F7) and Evacuate (Alt + F8) functions. The PC keyboard equivalents for these functions are displayed in parentheses respectively. These keys provide the same functions as those found on the control panel.

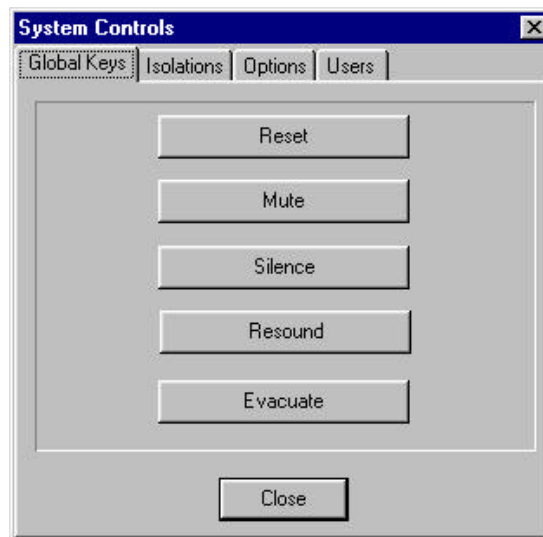


Figure 2: System Controls, Global Keys Page

- **Reset Key (F5):** Provided all events have been accepted (or the “accept before reset” option is unchecked), then pressing the Reset button will cause all current alarms to be cleared from the system. All fire control panels will be reset (as well as any other PCs set to accept remote reset commands).
- **Mute Key (F6):** The Mute Key cancels any alarm sounds generated by the PC and mutes the fire control panel’s internal buzzer.
- **Silence (F7) and Resound (Alt+F7) Keys:** Pressing either of these buttons silences (F7) and then resounds (Alt + F7) all the sounders in the system.
- **Evacuate Key (Alt+F8):** The Evacuate Key forces all the sounders to turn on (for example, global evacuate).

## 2.9.2 Isolations Page

The Isolations Page allows you to enable and disable devices and zones from the PC.

- **Select from Named Zones:** Pressing the Isolations Page key brings up a display of named zones as shown in Figure 3.

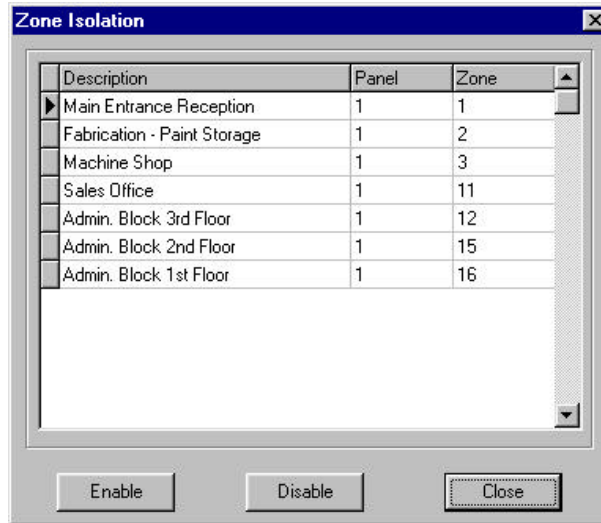


Figure 3: Zone Isolation Screen

- Any disabled zones are highlighted to make them easily identifiable. To enable or re-enable a zone, first select it by clicking on the description with the left mouse button, and then click the enable or disable button. After disabling a zone, wait a short time before the panel responds and the description is highlighted.
- **Select from Current Disabled:** This button is only enabled when there are zones or devices currently disabled. Clicking the button brings up a window with a list of current disablements as shown below in Figure 4.

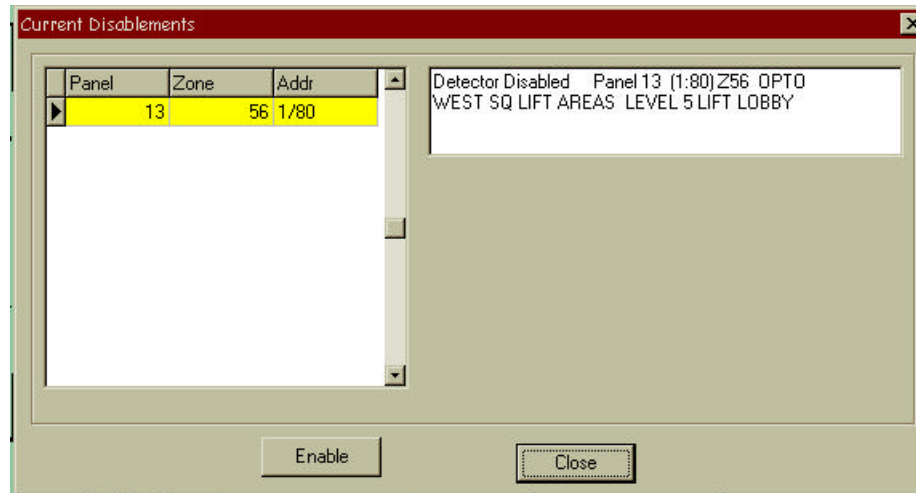
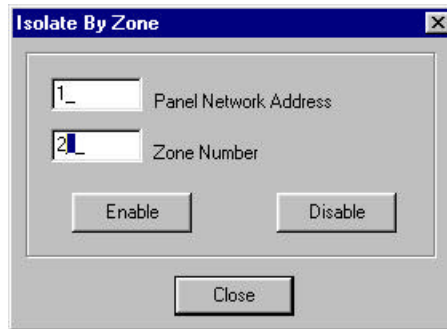


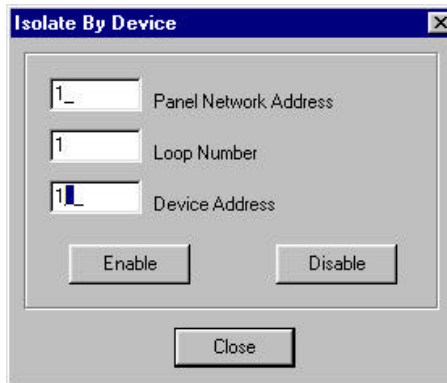
Figure 4: Current Disablements Screen

- **Zone by Address:** This page allows a zone (specified by panel and zone address) to be enabled or disabled. Simply enter the panel network address and the zone number. Then click the enable or disable button.



**Figure 5: Isolate by Zone Screen**

- **Device by Address:** This page allows a device (specified by panel, loop and address) to be enabled or disabled. Simply enter the panel network address, loop and device number. Then click the enable or disable button.

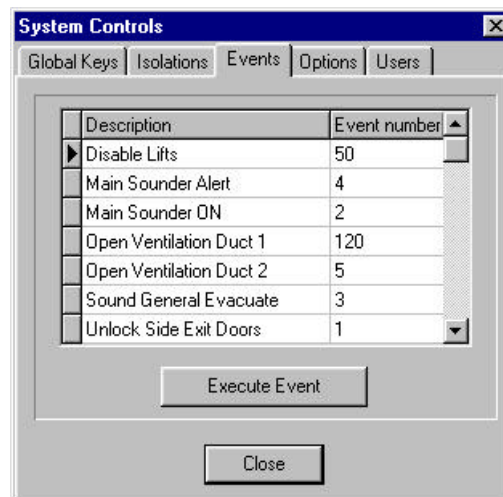


**Figure 6: Isolate by Device Screen**

### 2.9.3 System Events Page

**The System Events Page will not be displayed if no system events have been allocated.**

The System Events Page allows you to select system events from a pre-defined list. Selected events can then be transmitted into the fire system to drive outputs (relays and sounders) on a non-zonal basis. See Figure 7.



**Figure 7: System Controls, Events Page**

## 2.9.4 Options Page

The Options Page is only available for users with Level 3 access.

The Options Page allows some configuration of the way in which the system operates and responds to alarms and control keys. The Options Page is shown below in Figure 8. A brief description of the Options Page features follows Figure 8.



Figure 8: System Controls, Options Page

- **Auto Print:** Each new alarm detected can be automatically printed depending on the state of these check boxes. Click on a check box to change its state.
- **Reset Log:** The Reset Log Button clears all the events from the log on the next reset operation.
- **Can Resize:** This checkbox is disabled if the task bar is not visible (to prevent minimizing to an invisible task bar). When the task bar is visible and this box is checked, the “Run” program can be resized or minimized.
- **Task Bar Visible:** Check this box to make the task bar visible, or leave it unchecked to hide the task bar.
- **Accept Before Reset:** Checking this box forces all current alarms to be accepted before a local reset operation can be performed.
- **Auto Logout:** When this box is checked, the current user will be automatically logged out if no keyboard or mouse activity is detected for five minutes.
- **Use PC Sounder:** Checking this box enables alarm sounds to be generated from the PC speaker.
- **Panel Can Reset PC:** When checked, this option allows reset commands from a remote PC to be accepted and acted upon by this PC. These types of resets are acted upon irrespective of the state of the “Accept Before Reset” checkbox.
- **System Shutdown:** The Shutdown button shuts down the D9061 Fire Graphics Display program.



## 2.9.5 Users Page

The Users Page is only available for users with Level 3 access.

The Users Page allows current users to be removed from the log-in list, new users to be added to the log-in list and current users' data to be edited.

- **Removing a Current User from the Log-in List:** To remove a user from the log-in list, click on the line with the user's name and then click the Remove button. See Figure 9.

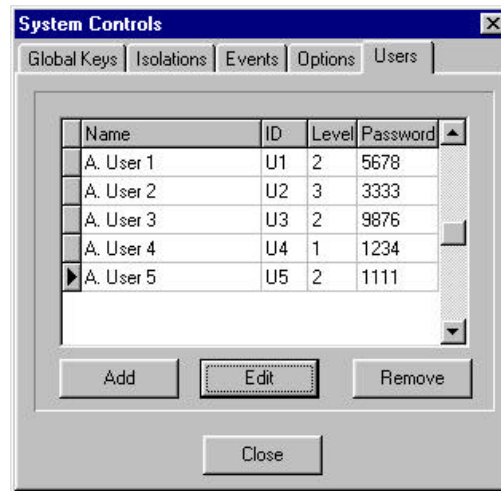


Figure 9: System Controls, Users Page

- **Adding a New User to the Log-in List:** To add a new user to the log-in list, click the Add button. Then fill in the required details as shown in Figure 10: name, ID (up to three characters), password and access level.

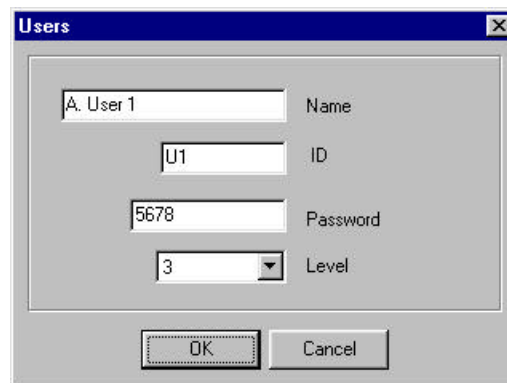


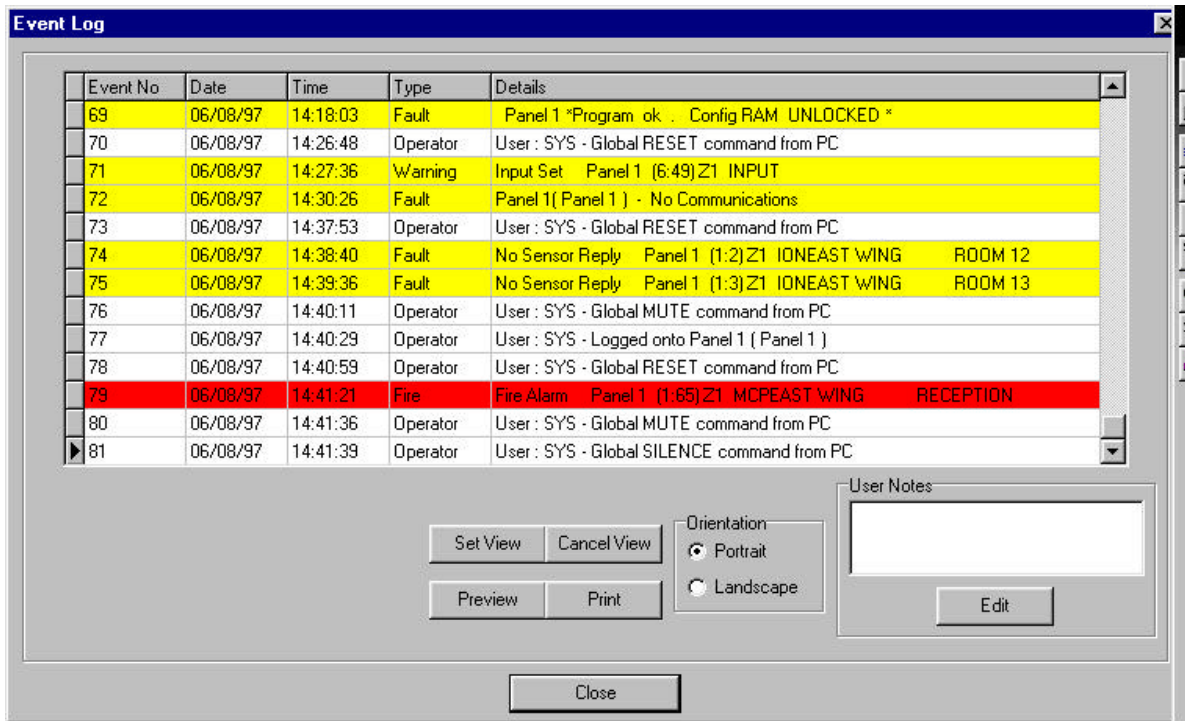
Figure 10: Users Data Screen

- **Editing a Current User's Data:** To edit a current user's data, click on the line with the user's name and then click the Edit button. Change the data as required. See Figure 10.

## 2.10 Print Screen Button

The Print Screen button prints out an image of the current state of the screen when clicked. See Figure 1.

## 2.11 View Event Log Button



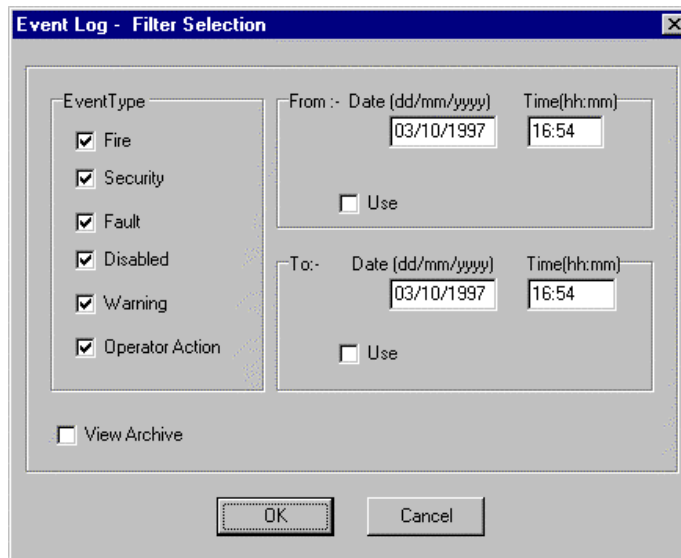
**Figure 11: Event Log Screen**

The View Event Log button provides access to the Event Log and Report Printing. The initial view of the log shows a table of the most recent alarms and operator actions recorded by the system. Older events can be seen by using the scroll bars on the side of the table, or by pressing the Page Up/ Page Down keys on the PC keyboard. See Figure 11.

Clicking the Set View button will give you access to a filter selection window from which the type of events and the range of times and dates can be selected for viewing. See Figure 12.

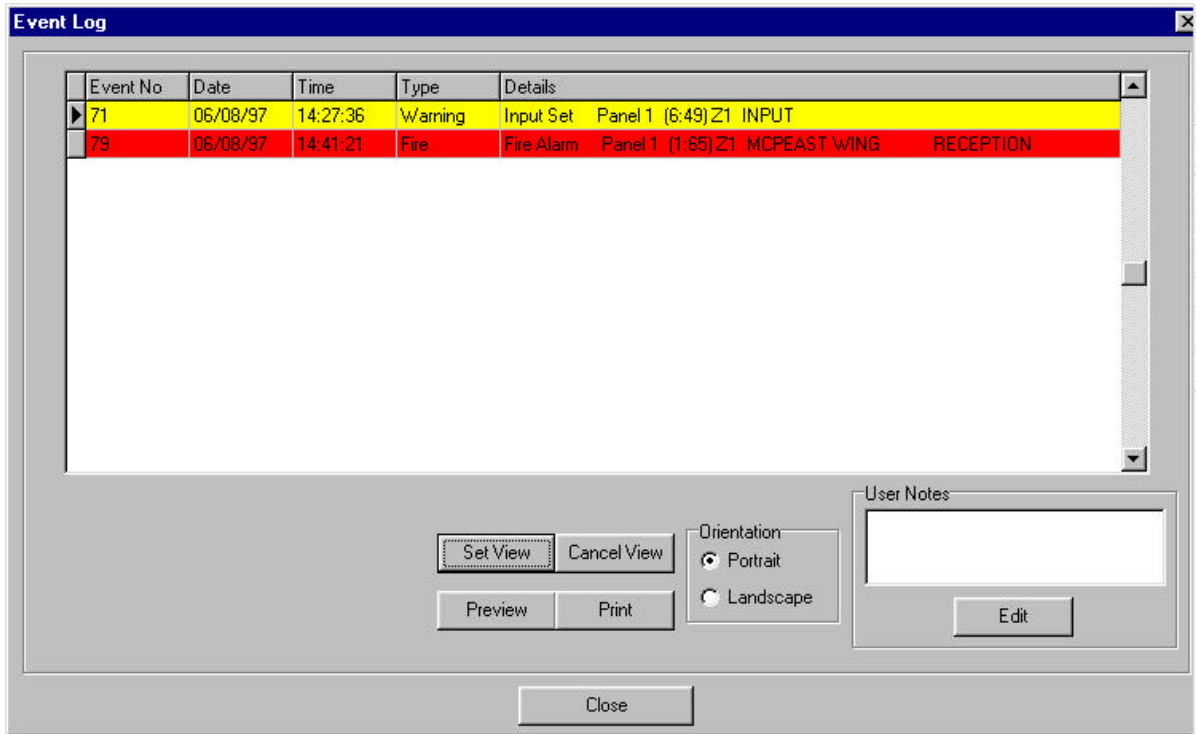
Check the boxes to select only the events to be viewed. Setting time and date ranges allows you to be more selective with the data to be viewed.

The current event log will hold and allows you to look back on the last 5,000 events. When this number of events has been reached, all the events in the log are moved to an archive log and the current log is emptied. Select the View Archive box to look back at old archived event log information.



**Figure 12: Event Log, Filter Selection Screen**

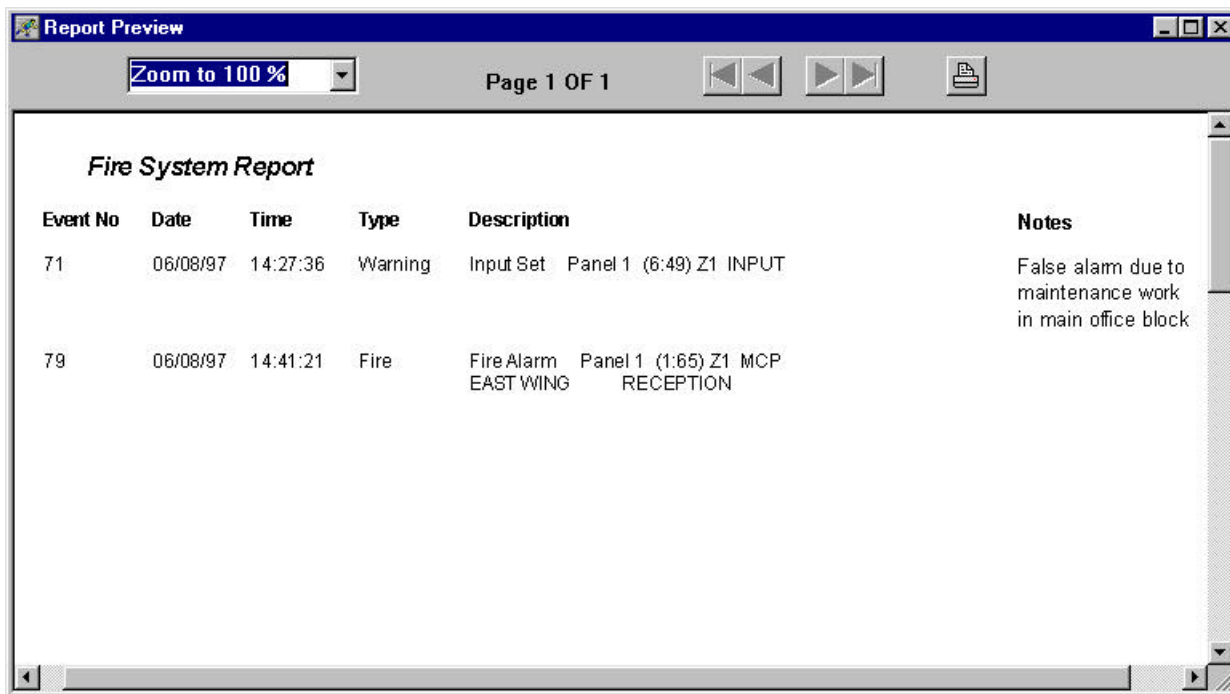
An updated view of the event log reflecting the entered data will appear by clicking the OK button. See Figure 13. Selecting either portrait or landscape sets the printer orientation of the report on the paper.



**Figure 13: Updated Event Log Screen**

Click the Preview button to see the event log report before sending it to the printer. See Figure 14.

To print the report, click on the printer icon. See Figure 1. Use the arrow buttons to move between each page number, or to move to the start/ end of the report. Use the Zoom selector to check the report before printing.



**Figure 14: Event Log, Report Preview Screen**

## 2.12 Log In/Out Button

When the Run program is first started, no one is logged onto the system and only the log-in button is available to the user (all other buttons are disabled). The icon on the Log In/ Out button shows a closed lock.

### 2.12.1 Logging In to the D9061 Fire Graphics Display Program

To log into the system, click the Log In/Out button to display the password window as shown in Figure 15.

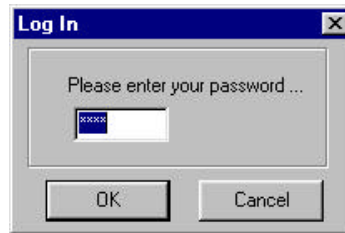


Figure 15: Log In Password Window

When a valid password has been entered and the OK button has been clicked, the icon on the Log In/Out button will change to an open lock and the other buttons on the main display will be enabled (depending upon the access level code).

### 2.12.2 Logging Out of the D9061 Fire Graphics Display Program

To log out of the system, click the Log In/ Out button. A confirmation window will appear. Click Yes to log out. See Figure 16. The icon on the Log In/ Out button will change to show a closed lock.



Figure 16: Log Out Confirmation Window

## 2.13 Enable/Disable

Enable and Disable actions may be carried out in the following ways:

- A. In Inspect Mode, at a device, by clicking on it and selecting enable/disable.
- B. In Inspect Mode, by clicking on an image associated with a sub-screen and selecting from the list of associated zones.
- C. By clicking the System Controls button and selecting the Isolations page. Isolations can then be performed by selecting from named zones, current disablements, zone by address and device by address.

As disable actions are performed and after the FACP has responded to the command, the PC will display the new disabled state. As enable actions are performed, the PC display will remove any associated disablements from its display of current events to reflect the new disabled state.

### 2.13.1 Partial Zone Disablement

When a single device in a zone is disabled, the FACP and PC report the full details. If the device image is visible on the current screen, its image is highlighted.

When subsequent devices in the same zone are disabled, the PC reports a "zone part disabled" event in the status window. No change in the state of the individual devices is shown on the graphics screen. When all the devices in a zone have finally been re-enabled, the "zone part disabled" event will disappear from the status window.

## 2.14 Logging onto a Panel

**A user access level of 2 or 3 is required when logging onto a panel from the PC running the D9061 Fire Graphics Display program.**

With a control panel image visible in the picture area and the operating mode set to Inspect Mode, you can log onto the FACP by clicking the mouse on the panel's image. A mimic of the control panel will appear, enabling you to carry out the same operations available on the panel's keypad. See Figure 17.

**The PC can only access a FACP that is connected directly to the PC.**

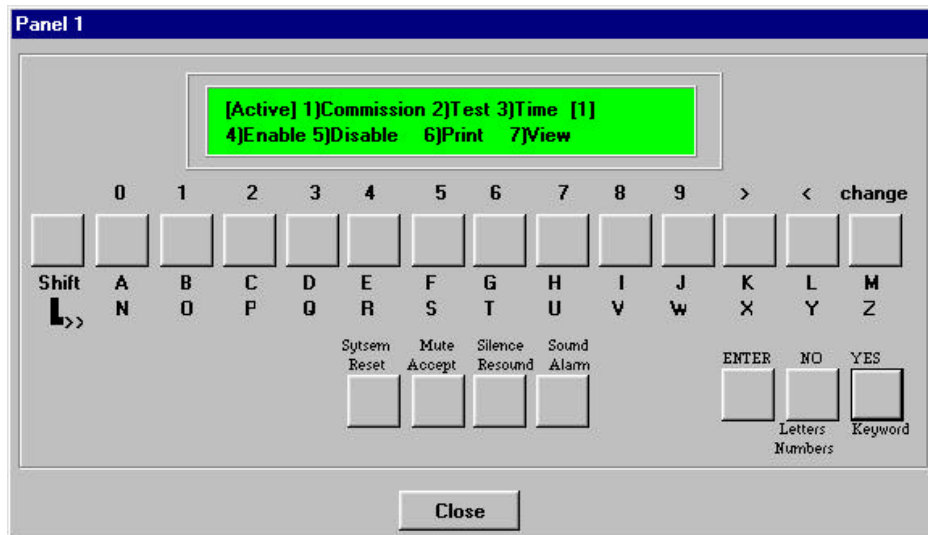


Figure 17: Logging Onto a Panel Display

# Appendix

**Accept Before Reset, 7**

**Adding a New User to the Log-in List, 8**

**Auto Logout, 7**

**Auto Print, 7**

## **Buttons**

Accept, 3

Log-in/out, 11

Mode Control, 3

Print Screen, 8

Status Scroll, 3

System Control, 4

View, 3

View Event Log, 9

Zoom Control, 3

**Can Resize, 7**

**Device by Address, 6**

**Editing a Current User's Data, 8**

**Enable/Disable, 11**

Partial Zone Disablement, 11

## **Keys**

Evacuate Key, 4

Mute Key, 4

Reset Key, 4

Resound Key, 4

Silence Key, 4

**Logging In to the D9061 Fire Graphics Display Program, 11**

**Logging onto a Panel, 12**

**Logging Out of the D9061 Fire Graphics Display Program, 11**

## **Mode Control**

Auto Mode, 3

Inpsct Mode, 3

Manual Mode, 3

**Panel Can Reset PC, 7**

**Picture Area, 3**

**Removing a Current User from the Log-in List, 8**

**Reset Log, 7**

**Runtime Screen, 2**

**Select from Current Disabled, 5**

**Select from Named Zones, 5**

**Status Display, 2, 3, 4**

**Status Panels, 4**

## **System Control**

Global Keys Page, 4

Isolations Page, 5

Options Page, 7

System Events Page, 6

User's Page, 8

**System Shutdown, 7**

**Task Bar Visible, 7**

**Use PC Sounder, 7**

**Zone by Address, 6**



**Radionics**<sup>®</sup>

© 1999 Radionics, a division of Detection Systems, Inc.  
® The Radionics logo is a registered trademark of Radionics,  
PO Box 80012, Salinas, CA, 93912-0012, USA  
All rights reserved.